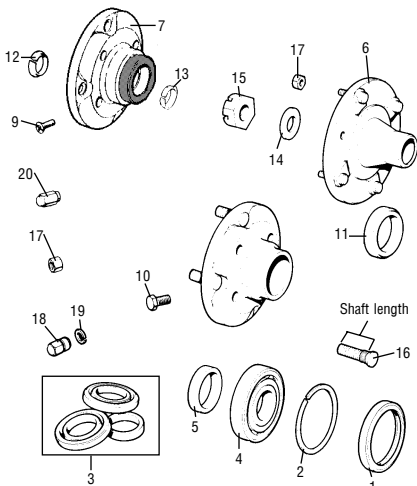


## DRIVE FLANGES AND FRONT WHEEL BEARINGS



## DRIVING FLANGES AND FRONT WHEEL BEARINGS

NO.	PART NO.	DESCRIPTION	QTY	REMARKS
1	GHS173	Oil seal with protector shield inner.....	2	
1	GHS101	Oil seal outer.....	2	
2	2A4361	Spacer, 0.094" 2.38mm seal to inner bearing.....	2	Discs except S NLA
2	Z1A1307	Spacer, 0.229" 5.81mm seal to inner bearing.....	2	Drum brakes and Cooper
3	GBH1018	Ball bearing kit with seals.....	2	
3	GBH143K	Timken kit with seals.....	2	
4	GBH113	Bearing, early type without built in spacer.....	NLA	
4	GBH211	Bearing with built in spacer.....	2	Use kit GHK1018
5	Z1A233	Bearing spacer for early type GBH113 only.....	4	
6	Z1A231	Drive flange, drum brakes only.....	4	CWE
6	BTA191	Drive flange, 997/998cc Cooper 7" disc brake.....	2	NLA
7	Z1A1270	Drive flange, Cooper S 1275GT, 7.5" brake disc.....	2	With 10" wheels
8	Z1A2655	Drive flange, 8.4" brake disc, late GT, all Mini's 1984 on.....	2	12" wheels
8	NAM6450F	Drive flange, Turbo Metro/ERA 8" vented disc.....	2	
9	SF604061	Drive flange to brake disc screw.....	8	For Z1A1270
9	CMZ407	Drive flange to brake disc screw.....	8	For BTA193
10	BTA370	Drive flange to brake disc bolt.....	8	Z1A2695
10	ADU6472	Drive flange to brake disc bolt.....	8	For GBD496
11	2A4295	Collar for rear of Z1A231/BTA191 drive flange.....	2	Drum brakes and Cooper
12	FAM9270	Outer tapered collar was BTA243, with BTA249 only.....	2	All disc except Cooper
13	BTA663	Inner collar on very early Z1A1270 flanges.....	2	Deleted by 1966
14	ZAT323	Washers, for use with Z1A179 only.....	2	Drum brakes Cooper
15	Z1A79	Nuts, all drum brakes and Cooper.....	2	1 1/2 AF socket size
15	BTA249	Nuts, disc type except Cooper.....	2	1 1/2 AF socket size
16	NAM5645	Studs for NAM6450F/Z1A2655.....	16	Replaces BTA339
16	BTA339	Studs, 1.1875" (30mm) shaft length, thread length 0.800".....	16	Now NAM5645
16	Z1A2064	Studs, Mini and S 1.375" (35mm) shaft length.....	16	Thread length 0.875"
16	Z1A2064L	Studs, Mini and S 2.000" (50.8mm) shaft length.....	16	Thread length 1.1250"
17	885322	Wheel nuts, round radius chamfer angle.....	16	
17	113067	Wheel nuts, 60° chamfer angle.....	16	Steel wheels 1985 on
18	GAW115	Mini special 10" alloy wheel use with GAW116 cover.....	16	1979 on
18	NAM69075	Latest Cooper wheel nuts (MiniLite lookalike).....	16	
18	FAM5701	Late Mini 10" hub cap round radius chamfer angle.....	16	
18	FAM3721	Wheel nuts for 10" hub cap 60° chamfer angle.....	16	Mini City
18	AIM1139	Wheel nuts for 12" hub cap 60° chamfer angle.....	16	Mayfair 1985 on
18	FAM4010	Wheel nuts for Denovo, Rostyle.....	16	NLA
18	FAM64	Wheel nuts for 12" hub cap on 1275GT only.....	16	NLA
19	FAM5263	Washers for FAM5701/3721.....	16	
19	FAM65	Washers for FAM64.....	16	
20	CN1	Chrome wheel nuts.....	16	Alternative to 88G322
20	AH48785	Chrome wheel nuts, 60° chamfer dome.....	16	1275 GT Rostyle wheel
20	CN2	Chrome wheel nuts, 60° chamfer angle.....	16	Weller steel and Rostyle