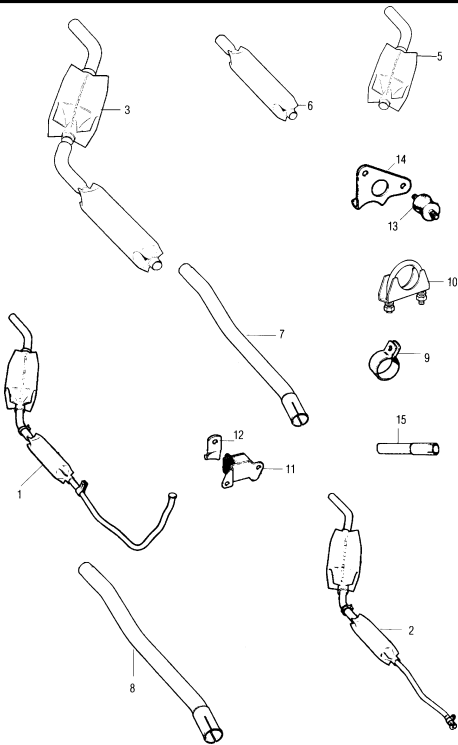


EXHAUST SYSTEMS - 1275GT & COOPER S



7-6 www.MiniaMania.com e-mail info@MiniMania.com 800-946-2642 Tech: 408-942-5595

EXHAUST 1275GT / COOPER 'S'

NO.	PART NO.	DESCRIPTION	QTY	REMARKS
1	GEX121	Exhaust assembly, 1275GT only	1	
2	GEX117	Exhaust assembly, Cooper and Cooper 'S'	1	NLA
3	RC40BOX	Twin box rear exhaust assembly	1	1.625" bore
3&7	RC40	Twin box exhaust assembly and downpipe	1	
3&7	RC50	Twin box exhaust assembly in stainless steel	1	
5	C-STR809	Rear exhaust box only	1	
6	C-STR808	Middle box	1	
7	RC40PIPE	Downpipe for RC40 twin box system	1	Cut for LCB
8	AN180V	Downpipe when using rear box only	1	Cut for LCB
8	AN181T	Pipe from catalyist to C-STR809	1	
9	GEX7054	Downpipe to manifold clamp, except LCB type	1	Std manifold or STR816
10	GEX9007	U bolt clamps to GEX7248/9, 1.750"	2	
10	GEX9008	Clamp to join downpipe to rear box, 1.875"	1	
10	GEX9008	Clamp to join downpipe to manifold, 1.875"	1	
11	GEX7081	Middle exhaust mounting	1	
12	GEX7248	Middle hanger bracket	1	Part of
13	GEX7251	Rear exhaust bobbin mounting	2	RC40FK
14	GEX7249	Rear hanger bracket	1	
	RC40FK	Fitting kit for RC40	1	
	C-ARA334	Exhaust system with 2" bore	1	ST product

ADAPTOR SLEEVES FOR USING REAR TWIN BOX ON ALTERNATIVE SIZE PIPES, PLUS PIPE DIAMETERS.

15	991-739	1.5" I/D 1.625" O/D reducing to 1.25" I/D 1.375" O/D	1	
15	991-773	1.625" I/D 1.750" O/D reducing to 1.25" I/D 1.375" O/D	1	RC40 to GEX1390

RC40 BOX Twin box 1.750" I/D 1.875" O/D inlet entrance / exit 1.750" O/D 1.625" I/D bore tail pipe

RC40 PIPE 1.750" I/D 1.875" O/D inlet at manifold end / exit 1.750" O/D 1.625" I/D CUT INLET END OFF FOR FITTING TO STANDARD BORE LCB

C-STR809 Inlet 1.750" I/D 1.875" O/D inlet / exit 1.750" O/D 1.625" I/D bore pipe end

C-STR808 1.750" I/D 1.875" O/D inlet / outlet 1.750" O/D 1.625" I/D MIDDLE BOX (used as rear race box also) upswept chrome end has 7" long inlet pipe, 16.75" silencer and a 16" swept up tail pipe. On the RC40 standard system the silencer is 14.75" long.

ALL EXHAUST BOXES ARE NOW ROUND FLANGES AND NOT CRIMPED EDGES AS SHOWN.

CONVERSION CHART SIZES:

1/4"	0.25"
3/8"	0.375"
1/2"	0.50"
5/8"	0.625"
3/4"	0.750"
7/8"	0.875"