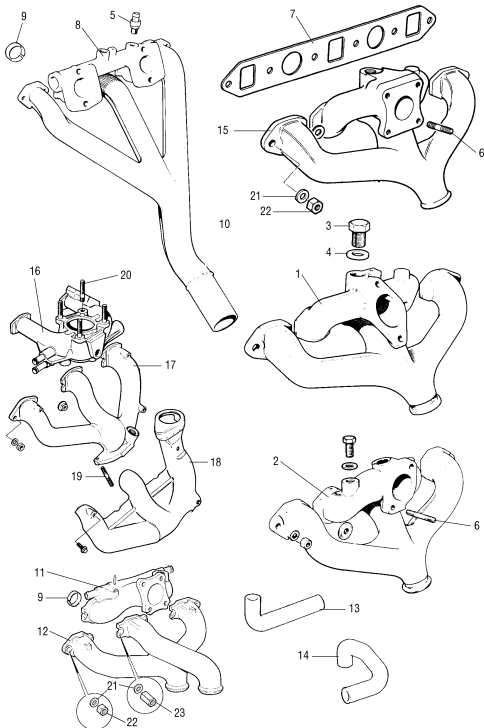


Inlet and Exhaust Manifolds



INLET AND EXHAUST MANIFOLDS

NO.	PART NO.	DESCRIPTION	QTY	REMARKS
1	12A1097	Inlet and exhaust manifold	1	Single HS2
2	12G3279	Inlet and exhaust manifold	1	Single HS4
3	ADF210	Blanking plug, alternative plug 886619	1	Fits all
4	1D3964	Washer for plug	1	
5	12H1405	Manifold union, plain	1	
5	13H6289	Non return valve union	1	NLA
6	CH52613	Manifold to carburettor stud, HS2 single and twin	2-4	For 12A1097
6	22A152	Manifold to carburettor stud, HS4, HIF38/HIF44	2-4	For 12G3279
7	AJM601	Manifold gasket	1	
7	GUG4008MG	Manifold gasket, Turbo	1	
7	C-AH1381	Large bore manifold gasket	1	Competition
8	AE6347	Original inlet manifold HS2/twin MK/II	1	Use C-AEG488
8	12G2463	Inlet manifold, twin HS2	1	Use C-AEG488
8	C-AEG489	Inlet manifold, twin HS4/6	1	
9	12G297	Twin inlet to cylinder head sleeve	2	
10	12G615	Exhaust manifold NLA	1	Use C-STR816
11	CAM6618	Inlet Manifold for HIF44	1	New Cooper
12	CAM6745	Exhaust manifold, HIF44	1	New Cooper
13	PEH10021	Hose - manifold outlet	1	
14	PEH10022	Hose inlet manifold to bottom hose	1	5/8" bore
15	12G5338	Inlet and exhaust manifold HIF38	1	
16	LKB10412	Inlet manifold TBI injection	1	Special order only
17	LKC10090	Exhaust manifold TBI injection	1	Special order only
18	LKK10025	Hot box for manifold	1	Special order only
19	TD108061A	Exhaust manifold stud	3	Special order only
20	IE108071	Inlet manifold stud to TBI	4	Special order only
21	51K1177	Washer, Manifold	6	
22	GHF261	Nut, Brass, Short	4	
23	51K1177	Nut, Brass, Long, (used on center two studs)	2	
23	LYH10008	Nut, manifold, steel, with attached washer	4	

7

