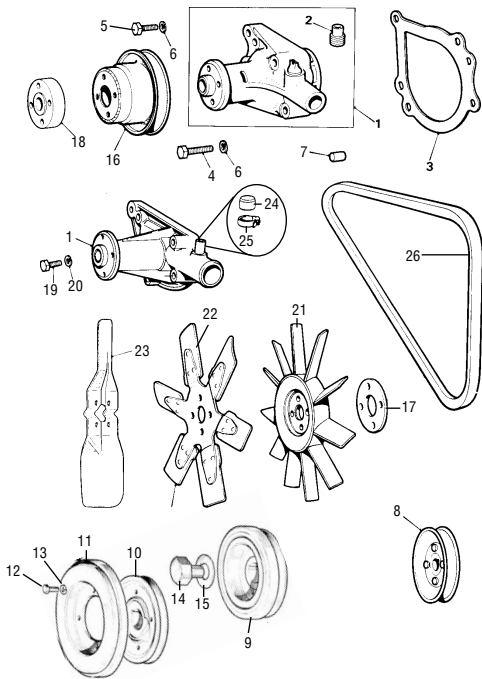


Water Pump, Pulleys and Ancillaries



WATER PUMP, PULLEYS AND ANCILLARIES

NO.	PART NO.	DESCRIPTION	QTY	REMARKS
1	10M294	Water pump, small impellor protruding - 0.3125" 7.90mm ...	1	Small Bore motors
1	GWP134	Water pump, large impellor protruding - 0.625" 15.75mm ...	1	1275cc Motors
1	GWP154	Water pump, no by pass outlet, but as per GWP134 ...	1	A plus 1300cc, Metro
2	882518	Adaptor, cut to length required (now cast in pump) ...	1	
3	882515	Water pump gasket ...	1	
4	HZ5515	Bolt water pump to block long ...	2	Alternative TAM1180
5	SH605101	Bolt water pump to block short ...	2	Alternative TAM1178
6	GHF332	LWN305 washer ...	4	
7	12G2077	Dowel, water pump to block ...	2	
8	CAM6323	Crankshaft pulley was 2A940 ...	1	
8	CAM6497	Crankshaft pulley, A plus ...	1	With timing shutter plate
9	CAM4929	Crankshaft vibration damper pulley ...	1	NLA use AHU1878
9	AHU1878	Crankshaft vibration damper pulley - A plus ...	1	With timing shutter plate
10	AE9454	Steel pulley ...	1	Cooper S
11	12A367	Damper ring ...	1	Cooper S
12	SH605051	Bolt ...	4	
13	LWZ305	Washer ...	4	
14	AE4312	Crankshaft pulley bolt 0.75" thread length with chamfer ...	1	For CAM6323/AEG454
14	12A283	Crankshaft pulley bolt 0.875" thread length ...	1	For CAM4929
14	TAM2019	Crankshaft pulley bolt 0.75" thread length ...	1	All A plus
15	12A398	Crankshaft pulley locktab 0.875" hole, except TAM2019 ...	1	Up to TAM2019
15	TAM2020	Crankshaft pulley locktab 0.875" hole ...	1	All A plus
16	CAM6239	Water pump pulley was 2A601 (3.875" diameter) ...	1	To 1985 plus Turbo/Auto
16	CAM116	Water pump pulley 4.265" 1000cc with 940 head fitted ...	1	
16	CAM6408	Water pump pulley large (4.725" diameter) ...	1	1985 on
16	12A667	Water pump steel 4.57" ...	1	Cooper 'S' 1275cc
17	12A312	Distance piece fan to pulley ...	A/R	
18	12G2452	Distance spacer large ...	1	NLA
19	GHF101	Bolt was SH604041, fan blade to pump ...	4	
20	GHF331	Washer ...	4	
21	12G1305	Eleven blade narrow plastic fan, fins 1.100" wide at tip ...	1	1959-68 and 1991 on
21	12G2129	Eleven blade thick plastic fan, fins 1.500" wide at tip ...	1	Wide ring MK3 on
22	2A998	Six blade fan, metal ...	1	Hot climate
23	2A997	Single blade fan ...	2	Tuning part
24	CAM4126	Blanking plug cap ...	1	When required
25	GHCS07	Clip, alternative clip 3H2963 ...	1	When required
26	9.5x825	Fan Belt, Short ...	1	
26	9.5x838	Fan Belt, Medium ...	1	
26	9.5x850	Fan Belt, Long ...	1	
26	9.5x864	Fan Belt, X-Long ...	1	