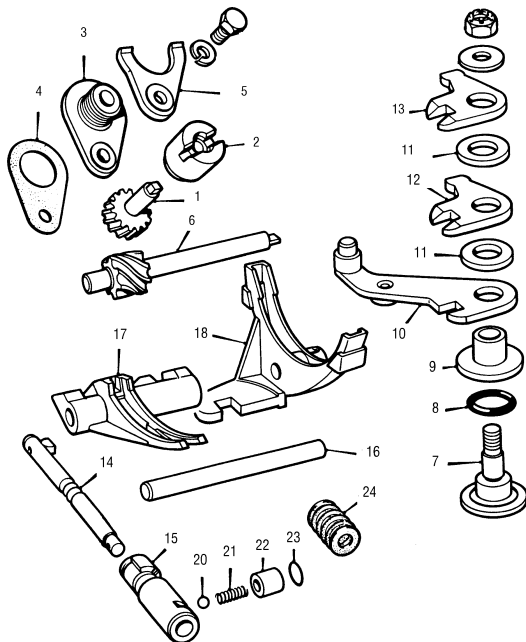


GEARBOX LINKAGE & SPEEDO DRIVE - ROD CHANGE



ROD CHANGE GEAR SELECTORS AND SPEEDODRIVE

NO.	PART NO.	DESCRIPTION	QTY	REMARKS
1	22A1881	Speedo pinion 17 teeth	1	All pre 1980
1	DAM2905	Speedo pinion 16 teeth, 3.1 final drive (from 1984 on)	1	12" wheels
1	TXD10006	Speedo pinion 18 teeth, 3.2 final drive	1	12A Engine TBI
1	TXD10004	Speedo pinion 15 teeth, 2.76 final drive	1	
2	2A3824	Metal seating bush	1	
3	DAM6488	Speedometer cable to pinion housing	4	Was 28G251
4	2A3628	Gasket	1	
5	22A862	U clip	1	
6	2A3720	Speedo drive spindle for 22A1881, 6 teeth	1	
6	DAM6028	Speedo drive spindle for DAM2905, 7 teeth, blue code	1	12" wheels, 3.1 l/drive
6	TXF10004	Speedo drive spindle for TXD10006, 5 teeth, red code	1	3.2 final drive
6	TXF10001	Speedo drive spindle for TXD10004	1	
7	22G1845	Bell crank pivot pin	1	
8	31B447	Pivot pin seal	1	
9	42H1077	Pivot bush	1	
10	22G1849	Release lever (reverse)	1	
11	42H1081	Lever spacer	2	
12	22G1847	Bell lever crank, lower	1	
13	22G1848	Bell lever crank, upper	1	
14	22G1858	Selector shaft	1	
15	22G1844	Interlock spool	1	
16	22G1854	Selector shaft for speed fork	1	
17	DAM7425	1st/2nd selector fork, genuine	1	
18	DAM7426	3rd/4th selector fork, genuine	1	
19	22G2595	Roll pin to hold 3rd/4th fork to rod	1	
20	BLS110	Detent ball	1	
21	22G2083	Detent spring	1	
22	22G1873	Detent sleeve	1	
23	22G1417	O ring for sleeve	1	
24	DAM3022	Gaiter for rod change oil seal	1	
	AHU1672	Rod change case oil seal	1	

Use 6/16 pinion on 12" wheels with 3.44 final drive.

These parts sit behind the offset drive flange cover

