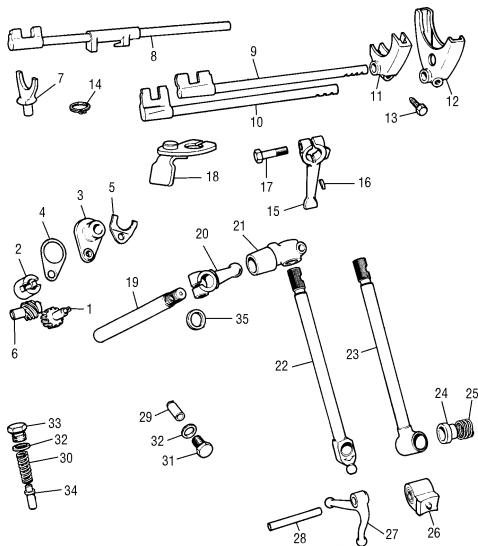


GEARBOX LINKAGE - MAGIC WAND & REMOTE TYPE



MAGIC WAND / REMOTE TYPE SELECTORS AND SPEED DRIVE

NO.	PART NO.	DESCRIPTION	QTY	REMARKS
1	22A1881	Nylon speedometer pinion gear, 17 teeth	1	
2	2A3524	Metal sealing bush	1	
3	04AM4888	Speedometer cable to pinion housing	1	Was 28G251
4	2A3628	Housing gasket	1	
5	22A862	Spring U plate	1	
6	2A3720	Speedo drive to mainshaft gear, 6 teeth	1	
7	22G827	Reverse fork	1	
8	22A169	Reverse selector rod	1	
9	22G821	1st/2nd selector rod	1	CWE 4 synchro
9	22A167	1st/2nd selector rod	1	CWE 3 synchro
10	22G822	3rd/4th selector rod	1	CWE 4 synchro
10	22A168	3rd/4th selector rod	1	NLA 3 synchro
11	22A611	1st/2nd selector fork	1	3 synchro
11	22G889	1st/2nd selector fork	1	4 synchro
12	22A610	3rd/4th selector fork	1	3/4 synchro
13	2A3492	Selector fork bolt	3	CWE
14	CCM108	Circlip, lever to pivot pin	1	
15	88G222	Change speed lever	1	
16	WKN404	Lever keyway	1	
17	2A3335	Lever securing bolt	3	One each for 15/20/21 levers
18	22A208	Change speed gale	1	
19	88G231	Gear change shaft	1	
20	88G224	Gear change knuckle, male	1	
21	88G223	Gear change knuckle, female	1	
22	22A253	Remote change shaft, when remote housing fitted	1	CWE
23	88G233	Gearchange for magic wand case	1	NLA
23	88G553	Remote gear change shaft (non remote housing)	1	85H engine 1970 on
24	2A3467	Gearlever thrust button, NLA plus magic wand, pre 1967	1	85H engine 1970 on
25	2A3390	Gearlever spring, NLA plus magic wand, pre 1967	1	85H engine 1970 on
26	22A1832	Gearlever seat and locating pad, NLA	1	85H engine 1970 on
27	22G79	Ball end lever crank	1	CWE
28	22G259	Pivot pin for 22A1832 and 22G79	1	
29	22G411	Detent plunger	3	
30	2A3847	Detent spring	4	
31	22A387	Detent plug	2	
32	AED172	Sealing washer	3	
33	22A149	Detent plug for reverse	1	
34	22A191	Reverse detent plunger	1	
35	13H577	Oil seal for remote gear shaft	1	

In 1970, 850cc Minis with engine number 85H101 on had a remote type gearbox case, which was fitted with a magic wand type gearlever, held up by a plate underneath using 23/24/25/26. A remote control can be fitted changing part 23 and fitting parts 22/27.