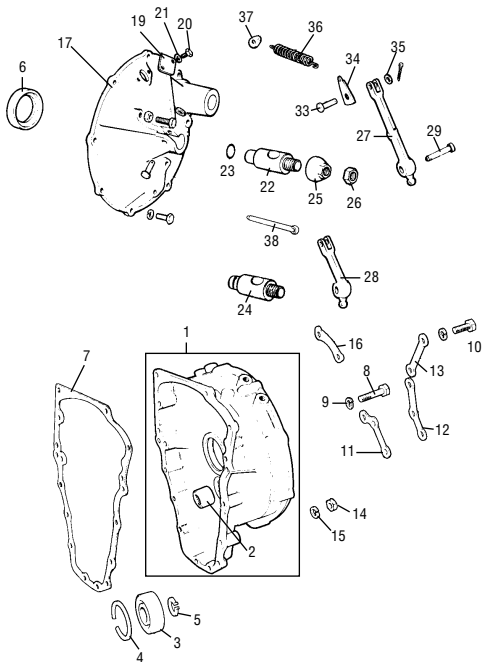


## CLUTCH HOUSINGS



## CLUTCH HOUSINGS

NO.	PART NO.	DESCRIPTION	QTY	REMARKS
1	22G1837	Flywheel housing	1	NLA, use FAM6257/9
1	DAM6074	Flywheel housing	1	Turbo only
1	DAM6259	Flywheel housing - use with AHU1707 or DAM3745	1	959cc,
1	TRO10015	Flywheel housing, was DAM6257, use with AHU1707	1	1300cc (Breather hole)
2	AHU1707	Idler bearing 1.375" 34.12mm O/D	1	875" I/D
2	DAM3745	Idler bearing 1.375" 34.92mm O/D	1	750" I/D
2	13H7848	Idler bearing 1.065" 27.05mm O/D	1	4synchro early
2	88G302	Idler bearing 1.004" 25.5mm O/D	1	3synchro
3	AAL8424	1st motion shaft nose bearing, was 13H6080	1	13H6080 not interchangeable with AAU8424
3	ADU6033	1st motion shaft nose bearing 1.692" 42.98mm O/D	1	Turbo only
4	2A3643	Circlip for AAU8424 in flywheel housing	1	
4	ADU17194	Circlip for ADU6033 in flywheel housing	1	Turbo only
5	CCN110	Circlip for holding 1st motion shaft bearing	1	
6	13H2934	Clutch oil seal (DAM2821 seal protector available)	1	
6	LVF10005	Clutch oil seal (reductor type flywheel)	1	Injection only
7	22A2237	Flywheel casing gasket	1	
8	BH605141	Clutch case screw, long was BH605141	3	DAM17758 bolt, alternative
9	GHF332	Clutch case washer was LWZ305	3	
10	GHF103	Screw, short was SH605081	3	DAM17753 bolt, alternative
11	22A1762	Locktab	1	Part of 18G8086
12	22A1761	Locktab	1	Part of 18G8086
13	2A3521	Locktab	1	Part of 18G8086
14	FNZ505	Nut	9	
15	GHF332	Washer was LWZ305	4	
16	22A1241	Locktab	1	Part of 18G8086
17	88G300	Cover, with timing hole	1	
17	AHU1106	Cover - Verfo with no timing hole	1	
18	DAM17755	Bolt - clutch cover	8	
19	2A3635	Cover for timing hole	1	
20	SH604941	Screw for timing hole cover	2	
21	GHF331	Washer	2	
22	22A180	Plunger, press fit for release bearing GRB201	1	
22	DAM1955	Plunger, which takes GRB238 and DAM2413	1	
23	DAM2413	Clip, to hold GRB238 to DAM1955	1	Release bearing fit loose on plunger 1982 on
24	DAM5353	Plunger verfo clutch	1	
25	22A427	Plunger stop	1	
26	NT610041	Nut, was FNZ210	1	
27	22A2204	Clutch arm, was 2A3518, pre Verfo	1	
28	DAM5355	Clutch arm shaft verfo only	1	
29	CLZ628	Clevis pin, lever to case	1	
30	GHF302	Washer, was FWZ105	1	
31	GHF101	Adjusting screw was HZS409	1	
32	FNZ604	Locking nut	1	
33	CLZ518	Clevis pin, lever to push rod	1	
34	2A3601	Spring anchor	1	
35	GHF301	Washer was FWZ105	1	
36	1G6999	Clutch spring	1	
37	2A3600	Anchor spring end	1	Pre Verfo
38	13H396	Slave cylinder push rod	1	All Minis