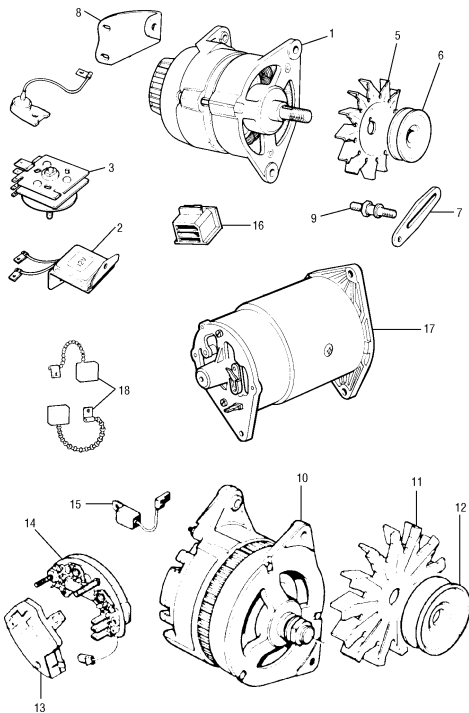


## ALTERNATOR, GENERATOR AND SUNDRIES



## ALTERNATOR, DYNAMO AND FITTINGS

NO.	PART NO.	DESCRIPTION	QTY	REMARKS
1	GEI205	Rebuilt alternator, Unipart		
1	GEI205MS	Rebuilt alternator, domestic	1	16/17ACR
1	GXE2257	A115/45 alternator	1	1980-85
2	UCB100	Regulator not GXE2257	1	
3	BAU2288A	Rectifier not GXE2257	1	
4	UCB110	Brush set not GXE2257	1	
4	GG8512	Brush set for GXE2257	1	
5	17011	Generator fan	1	
5	C37222A	Fan for 12G1054 when alternator	1	16/17 ACR
5	AAU3956A	Lucas fan for BAU1461	1	16/17 ACR
6	12G1054	Pulley 2.750" wide for dynamo and alternator	1	16/17 ACR
6	BAU1461	Pulley 2.500" wide for alternator	1	16/17 ACR
7	12G2627	Adjustment bracket link	1	
8	12G1053	Pre A-Plus fitting bracket	1	
8	CAM4853	A-Plus fitting bracket	1	
9	12G289	Pillar for adjustment bracket	1	
10	GXE2297	A127/45 Alternator, was GEU2276	1	1985 on
11	AUU1097	Fan	1	1985 on
12	ADU7778	Pulley	1	1985 on
13	BAU5265	Regulator	1	1985 on
14	BAU5813	Rectifier	1	1985 on
15	BAU4924	Capacitor	1	1985 on
16	GEI250	Fitting plug for wires to 16/17 ACR alternator	1	1985 on
17	GEI1101	Generator	1	
17	GEI1101MS	Generator rebuilt	1	
18	GG8102	Brush set	1	

1980-85 an A115/45 alternator was fitted which is GEU2257 special assembly.